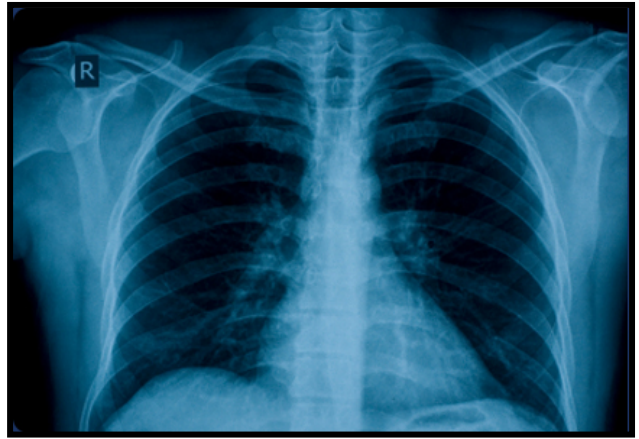




**Hospital Employed Practice Opportunity
One Location**



INFECTIOUS DISEASE

<Dear John Doe>

Bellin Health System invites you to consider an exceptional opportunity that will allow you to have it all...a busy, yet rewarding practice and tranquil waterfront living in the Green Bay metro. Enjoy spectacular scenery and beautiful lakefront developments in a true four-season climate. Bellin has 26 primary care clinics in Northeast Wisconsin and Michigan's Upper Peninsula – with support from more than 208 specialty physicians.

- ✦ Very satisfying outpatient practice on hospital campus
- ✦ Perform inpatient consults at a state-of-the-art hospital facility
- ✦ Opportunity to be involved with student medical education
- ✦ 24-hour nurse triage center
- ✦ Dedicated Hospitalist Team
- ✦ 24 hour ICU coverage
- ✦ Large primary care focused based Health System in northeastern Wisconsin and UP of Michigan.
- ✦ Full complement of specialists available on hospital campus
- ✦ **Salary in the top 25 percentile of the nation plus potential for RVU and Quality Bonuses**
- ✦ **Competitive Sign-On Bonus and Relocation Assistance Available**
- ✦ Complete benefits package including Malpractice, Health and Dental insurance, Retirement Plan with matching contributions, plus **\$5,000 CME Stipend**

**Home of the Super Bowl XLV Champions
The Green Bay Packers**



Safe communities, easy access to three of the State's largest cities, low cost of living, and an average commute time of 15 minutes or less make this community a great place to live and raise a family. The area school systems are the envy of many in the Nation: 1st or 2nd in ACT Scores in the Nation for the last 16 years, 2nd for graduation rates in the Nation, 2nd in the world for international science test comparison, 2nd lowest dropout rates, 3rd in SAT scores in the nation, ranked 8th of the smartest states, in the top 10 for Advanced Placement in the nation, and among the safest schools in the nation (WEAC website).

For more information: Please contact Sharon Fischer, Bellin Health System Provider Recruiter at safisc@bellin.org or 920.445.7214. You may also fax your CV to 920.445.7209